

THIS IS A PESTICIDE ADVERTISEMENT

TO BE HANDLED BY TRAINED PERSONNEL ONLY.



Baytex[®] 50 EC

x 25

For the control of mosquito larvae



Bayer Environmental Science
A Business Operation of Bayer CropScience



Baytex 50 EC

For the control of mosquito larvae

Mosquito control

Mosquito control demands the commitment of individuals, institution and from people of all walks of life. The presence of mosquitoes is an indication that breeding sites are nearby.

While conventional insecticides are recommended to control adult mosquitoes and the larvae,

- good housekeeping and
- breeding source reduction are the priorities to be given in a mosquito control program.

Adult mosquitoes

Mosquitoes are active only at certain times of the day, usually at dusk or by night, spending the remaining time on surfaces hidden from view.

Mosquito larvae

Any control action against mosquitoes should also include control against the larvae.

Mosquitoes breed in open or close to water bodies. This can consist of permanent water bodies such as swamps or lakes, or temporary sources such as tidal pools and rainwater accumulation in old tyres, tree hollows, refuse dumps, empty disposed cans or containers.

Different mosquito species breed in different habitats ranging from fresh to salty and from clean to polluted water. For example, the *Aedes* mosquito prefer clean stagnant water while the *Culex* mosquito prefer polluted water. It is important to identify the problem species correctly and to confirm its breeding sites.

Control strategy

Once located, these breeding sites can be treated with Baytex 50 EC as a spray treatment. At the recommended rates used for mosquito larvae control.

Baytex 50 EC for Public Health Authorities

Baytex 50 EC, with fenthion as the active ingredient.



Larvicide application in mosquito breeding areas.



Larva surveillance.

Direction For Use:

Control of mosquito larvae (*Anopheles* spp. and *Culex* spp.) in stagnant water.

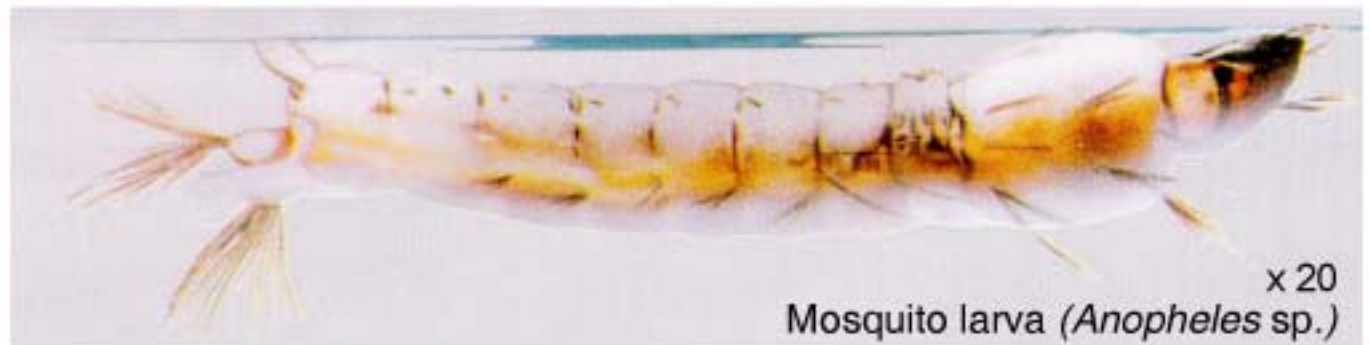
Places	Sprayer Type	Dilution Rate	Usage Rate
Polluted or silage waters	Knapsack sprayer	10 ml : 10 litre water	200 litre mixture/hectare/ 10 cm water depth
	Motorized sprayer	100 ml : 10 litre water	20 litre mixture/hectare/ 10 cm water depth

Recommendation of Baytex 50 EC for septic tanks.

Places	Tank Size	Rate of Baytex 50 EC
Septic Tanks for control of mosquito larvae	5.0 m ² with 1.2 m depth (volume : 6.0 m ³)	6 ml
	6.8 m ² with 1.2 m depth (volume : 10.0 m ³)	10 ml



x 20
Mosquito larva (*Aedes* sp.)



x 20
Mosquito larva (*Anopheles* sp.)



Bayer Environmental Science
A Business Operation of Bayer CropScience

Bayer Co. (Malaysia) Sdn Bhd (7563 M)
T1-14, Jaya 33, No. 3, Jalan Semangat, Seksyen 13,
46200 Petaling Jaya, Selangor, Malaysia.
Tel: 03-6209 3088 Fax: 03-7960 5717
Email: es.malaysia@bayercropscience.com

© Copyright of Bayer Co. (Malaysia) Sdn. Bhd.
All names referred to are trademarks of their respective owners.
© Baytex 50 EC and Baytex 50 EC logo are registered trade marks of Bayer Co. (Malaysia) Sdn. Bhd.

For more information please contact:

READ THE PRODUCT LABEL BEFORE USE