

THIS IS A PESTICIDE ADVERTISEMENT

TO BE HANDLED BY TRAINED PERSONNEL ONLY.



Cislin[®]

x 20

**An effective
pyrethroid
spray to control
your pest problems
combining rapid
knockdown and kill**

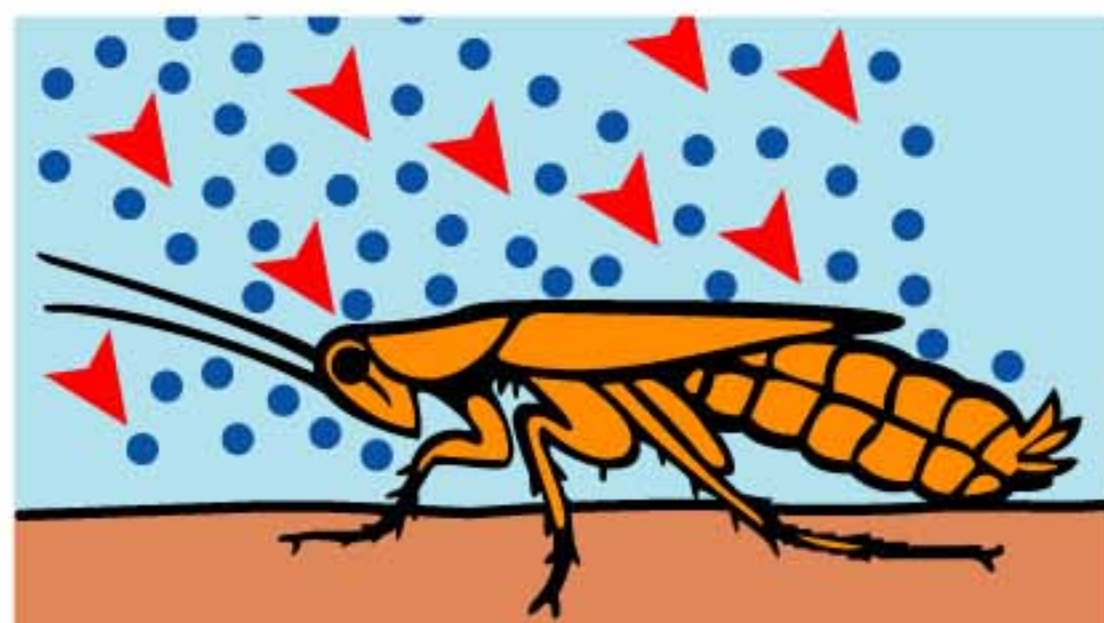


Bayer Environmental Science
A Business Operation of Bayer CropScience



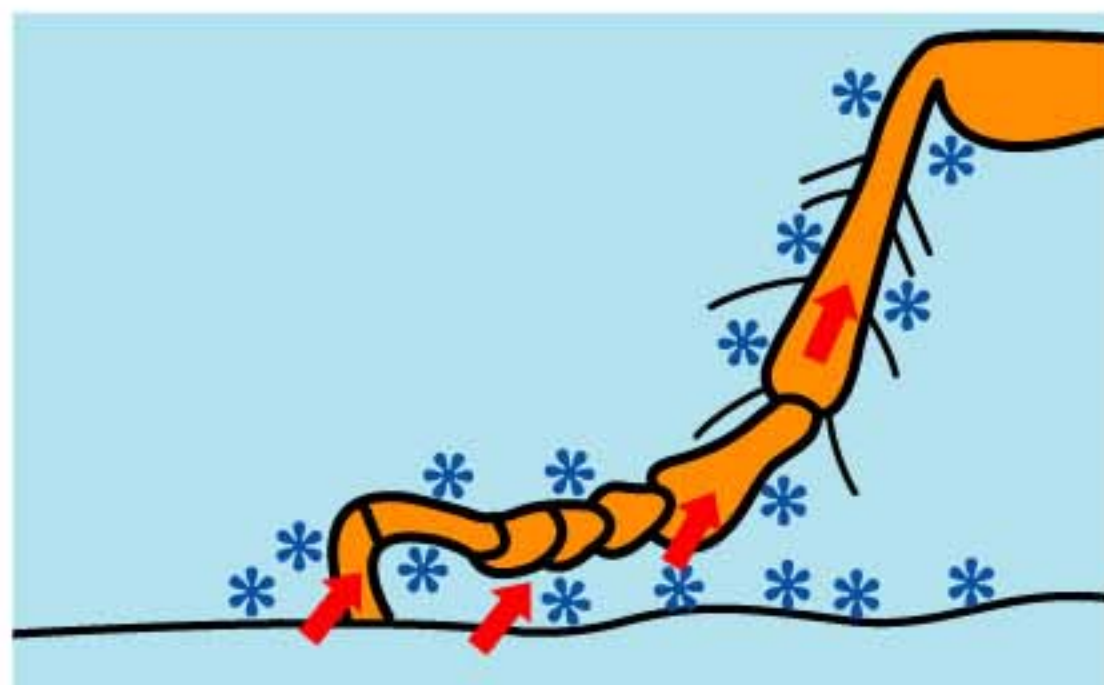
Cislin®

Effective Residual spray combining effective 'flush-out', knockdown and kill



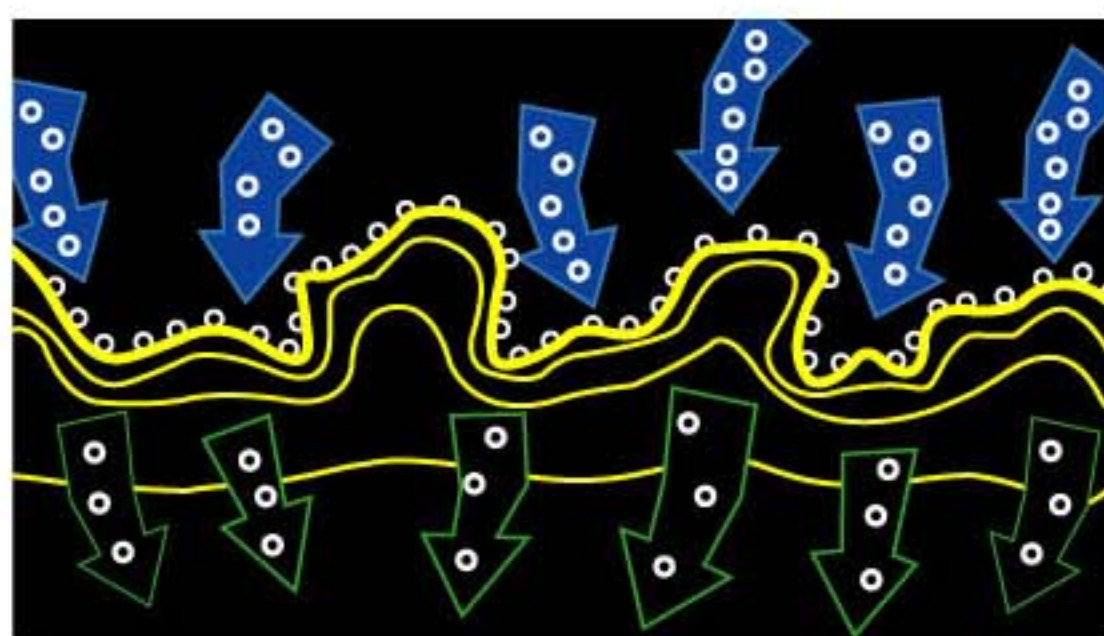
Cislin has effective knockdown and 'flushing-out' action

That explains the high level of insecticidal activity. Even if the spray does not reach the pests, they would be irritated by the vapour in the air to leave their hiding places. In so doing, they'll come into contact with the sprayed surfaces and get killed.



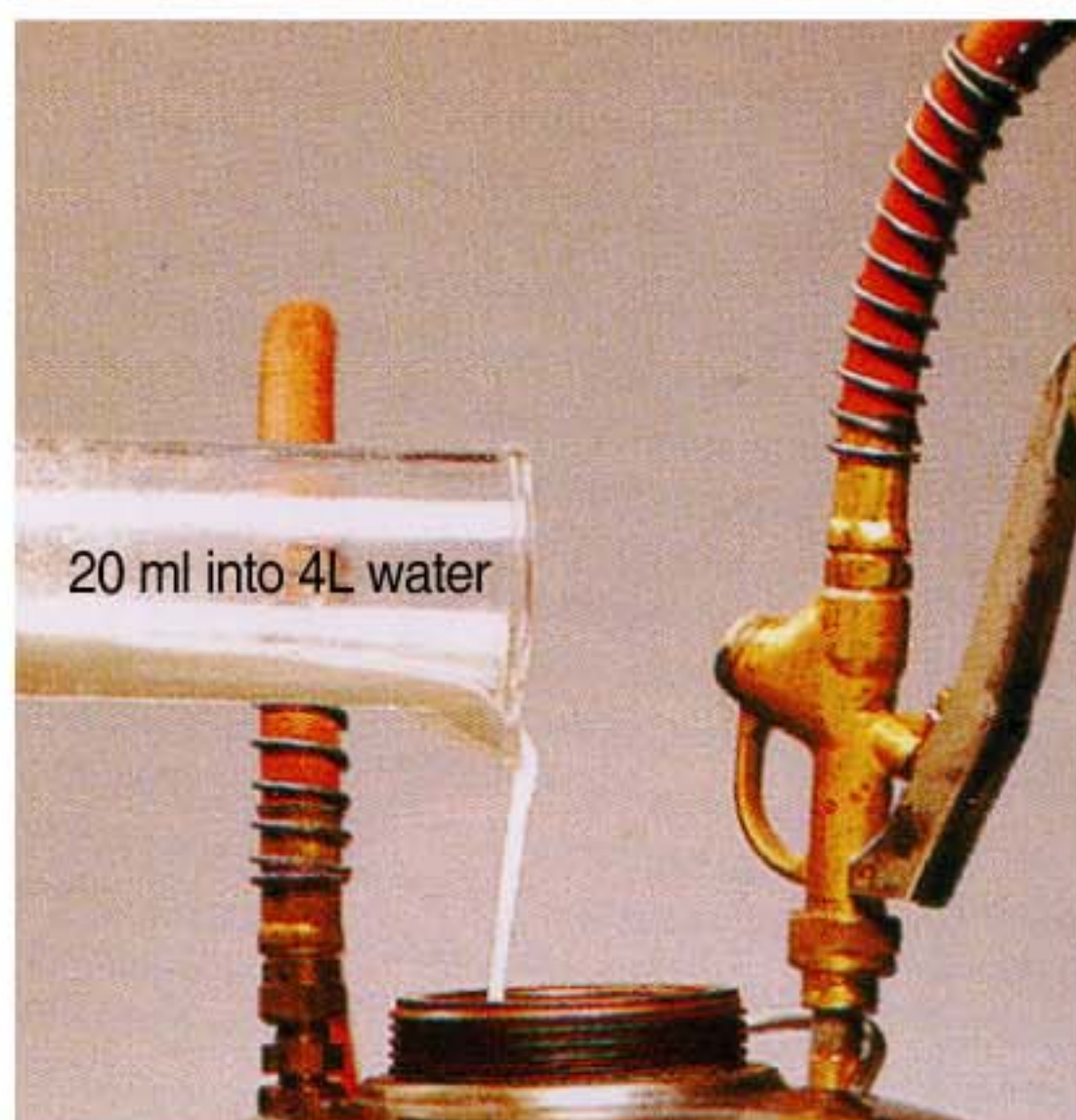
It is photostable

Depending on the type of surfaces and the extent of infestation, the residual effect could last up to 2 months, provided the surfaces is not cleaned or washed.



Cislin is an Emulsifiable Concentrate

Emulsifiable Concentrate: a solution of active ingredient and surfactants in a water immiscible solvent, which forms a stable emulsion after dilution with water. These emulsions leave few visible deposits on the treated surface; however, diluted emulsifiable concentrates can have a strong smell and are absorbed by porous surfaces.



Direction for Use and Application Guide

Dilute Cislin at the rate of 5 ml in 1 liter of clean water. Spray using sprayer fitted with fan nozzle that gives a coarse spray to surfaces at 50 ml per sq meter.

Direction for use:

Places / Situation	Pests	Usage Rate Per 1 litre water	Spray Volume Per m ²	Remarks
Public health: kitchen, cabinet, floor, walls, under the sink, corners, cracks and crevices.	Flies (<i>Musca domestica</i>) Cockroaches (<i>Periplaneta sp.</i> ; <i>Blattella sp.</i>)	5 ml (1 : 200)	50 ml	Effective period is 2 months.



The potent synthetic pyrethroid

Cislin contains 2.8% w/w deltamethrin that is single isomer.

Use as a surface spray...

		Indoors	Outdoors
Surface Spray (diluted)	Direct Contact	✓	✓
	Residual Spray	✓	✓

See label for full details.



Bayer Environmental Science
A Business Operation of Bayer CropScience

Bayer Co. (Malaysia) Sdn Bhd (7563 M)
T1-14, Jaya 33, No. 3, Jalan Semangat, Seksyen 13,
46200 Petaling Jaya, Selangor, Malaysia.
Tel: 03-6209 3088 Fax: 03-7960 5717

© Copyright of Bayer Co. (Malaysia) Sdn. Bhd.
All names referred to are trademarks of their respective owners.
® Cislin and Cislin logo are registered trade marks of Bayer Co. (Malaysia) Sdn. Bhd.

For more information please contact:

READ THE PRODUCT LABEL BEFORE USE

JIR.P/0709/366