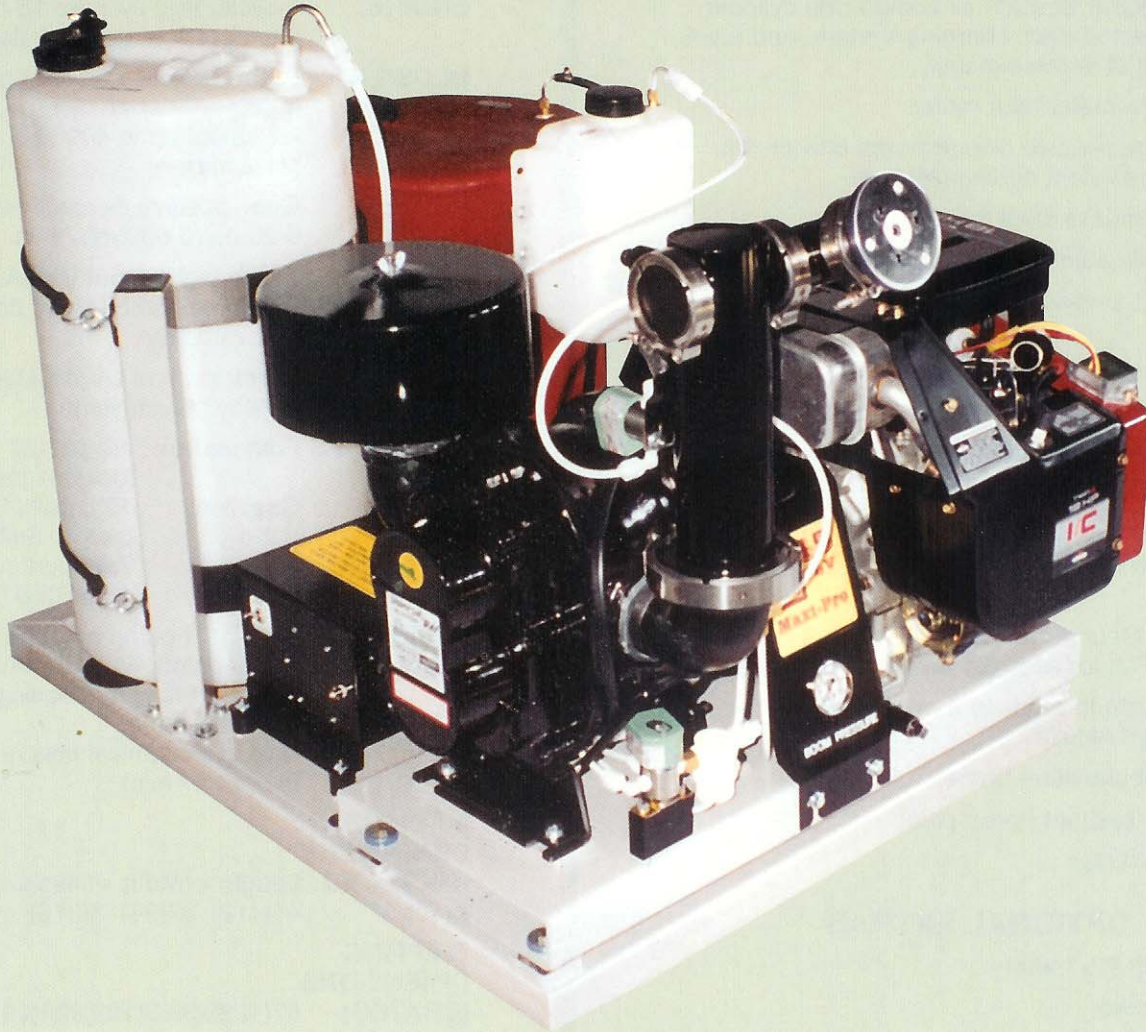


# DYNA-FOG® HIGH POWER WITH MAXIMUM EFFICIENCY

## Maxi-Pro 145™ ULV



The Dyna-Fog® Maxi-Pro 145™ is the single nozzle version of the well established high powered 18hp Dyna-Fog® Maxi-Pro4™.

The MAXI-PRO 145™ is built from only the highest quality materials with rigorous quality control at all stages of assembly. Coated with chemical resistant epoxy paint, this unit will give reliable usage with the very minimum of maintenance.

The DYNA-FOG® DYNA-FLOW™ nozzle will produce 90% of the droplets below 20 microns when used at the recommended flow rates and pressures. This meets the requirements of all current chemical labels.

Over 50 years of experience has gone into the design and production of this addition to the MAXI-PRO™ family of well established ULV applicators.

*Backed by DYNA-FOG'S® 2-year warranty and a worldwide network of factory trained, experienced distributors.*

A Digital Remote Control Box is standard with the Dyna-Fog Stainless Steel Gear pumping system. Complete management of all machine functions such as:

- Machine On/Off
- Engine Start/Stop
- Formulation Spray On/Off
- Variable Output Control Knob
- Digital Display of Formulation Output and Vehicle Speed

# DYNA-FOG® MAXI-PRO 145™

## STANDARD FEATURES

- 18 hp Briggs & Stratton air cooled twin cylinder engine, electric start, charging system, and spark arrestor fitted to the exhaust.
- Digital tachometer/hour meter.
- Direct drive, positive displacement blower with corrosion resistant air filter/silencer.
- Electric stainless steel solenoid valves.
- Directionally adjustable nozzle head.
- Liquid filled pressure gauge to monitor nozzle air pressure.
- Remotely controlled flushing system.
- No chemical flows through the vehicle cab.
- Shock-absorbing vibration pads that cut vibration to a minimum.
- Quantity gauge on the gasoline tank.
- Small base frame to permit mounting in almost any truck.
- Choice of Gear pump (standard), Precision Pulse Pump or FMI for accurate chemical flow rates.
- Single nozzle to produce a precise droplet size for optimum results.
- Welded tubular steel frame.
- Chemical resistant epoxy paint.
- 2-year warranty.

## OPTIONAL EXTRAS

- Heavy duty 12v battery
- Manual choke
- Automatic engine idle back
- Precision Pulse Pump, positive displacement. 0-20 oz (0-600 ml/min)
- FMI 0-18 oz (532 ml/min)

*For other Truck Mount Options see separate literature.*

Certified to comply with Specification WHO/VBC 89.972 of the World Health Organization, and exceeds USA Military Spec MIL-A-52940-C.

## SPECIFICATIONS MODEL 2748

- ENGINE:** 4-cycle, twin cylinder 18 hp gasoline engine, alternator and electric start
- BLOWER:** Rotary, positive displacement direct drive.  
Air output up to 400 cfm (11.2 m<sup>3</sup>/min)
- PUMP:  
OUTPUT** Gear, positive displacement  
0-20 oz (0-600 ml) / min.
- NOZZLE:** Single high output **DYNA-FLOW™** nozzle adjustable 360° horizontally and vertically
- TANKS:** Corrosion and UV resistant high density polyethylene.
- CAPACITIES** Formulation: 15 gall (57 l) with lockable cap.  
Gasoline: 12.5 gall (47 l) with gauge. Sufficient for 7.5 hours running.  
Flush: 1 gall (3.8 l)
- REMOTE CONTROL** (with gear pump only) Engine start, Spray on/off, Flush/formulation Chemical flow rate setting Machine on/off Displays chemical flow rate (oz or ml / min)

## MACHINE DIMENSIONS

**UNCRATED:** Length x Width x Height  
in (cm) 44(112) 37(94) 30(76)

## SHIPPING DIMENSIONS

**(CRATED):** 47(122)x39.5(102)x39(99)

## SHIPPING

**VOLUME:** 42.8 ft<sup>3</sup> (1.21 m<sup>3</sup>)

## SHIPPING

**WEIGHT:** 556 lb (252 kg)

To maintain the highest quality product, Curtis Dyna-Fog Ltd reserves the right to make technical modifications at any time without prior notice.

©Dyna-Fog is a registered trademark of Curtis Dyna-Fog Ltd.

™Maxi-Pro and Dynafog are trademarks of Curtis Dyna-Fog Ltd.

CURTIS **DYNA-FOG**® Ltd.

P.O. Box 297  
17335 US Highway 31 North  
Westfield, IN 46074-0297 U.S.A.  
Ph: 317-896-2561  
Fax: 317-896-3788  
e-mail: [dynafog@iquest.net](mailto:dynafog@iquest.net)  
<http://www.dynafog.com>

CDL 302 (5/99) PRINTED IN U.S.A.