

This is a Pesticide Advertisement.

ABATE®

Original Temephos Larvicide & Adulticide by BASF



ABATE® 500

BASF
We create chemistry

Scale 10:1

For more than 20 years, ABATE® larval products have continuously provided protection and potent performance in the most challenging conditions and at a community level – whether for professional or personal usage. Its active ingredient, temephos, manages a wide spectrum of disease-causing insects such as mosquitoes - and at the larval stage.

Why ABATE®?

- Disrupts the cycle of insect-borne diseases
- Long residual performance

ABATE® 500 - Use against adult mosquitoes and larvae

ABATE® 1.1G

Carrier & Appearance:

Light brown/grey free-flowing sand granules featuring a red flint sand core to provide good penetration through heavy canopy.

Application Rate:

5kg / Hectare

Designed to Treat:

Shallow stagnant water area such as ponds, drains, water containers, water tanks, ant traps, flower pots, and vases.

Application:

Spread granules evenly.



ABATE® 500

Carrier & Appearance:

Liquid

Application Rate:

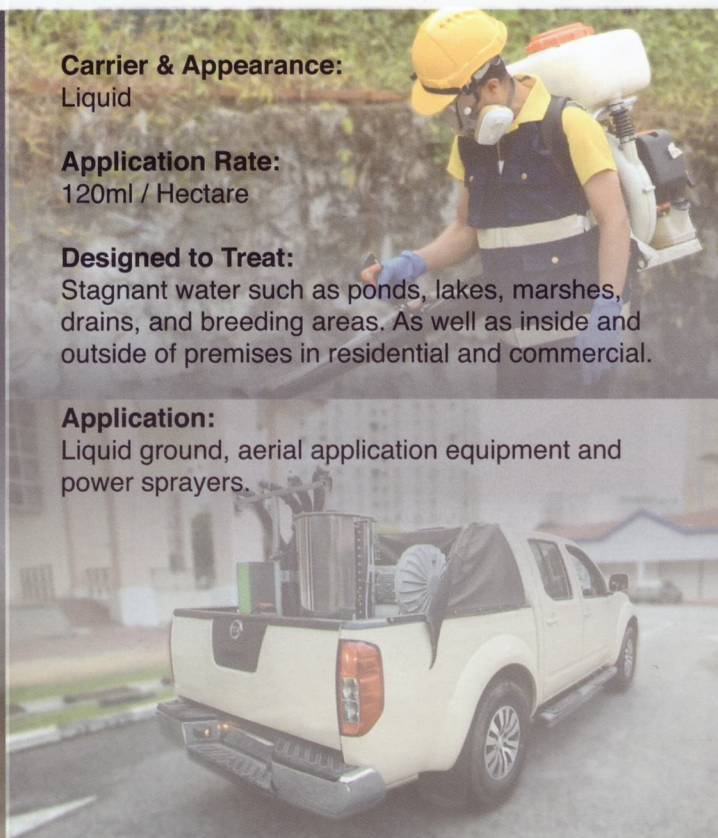
120ml / Hectare

Designed to Treat:

Stagnant water such as ponds, lakes, marshes, drains, and breeding areas. As well as inside and outside of premises in residential and commercial.

Application:

Liquid ground, aerial application equipment and power sprayers.



Characteristic of ABATE®

Mode of Action

ABATE® acts by ingestion or contact inhibiting enzyme that is important in the normal functioning of the insects' nervous system resulting in death.

Identification

Active material:
Temephos (organophosphate)

Formulation

ABATE® 500 is an Emulsifiable concentrate containing 47.4% w/w active ingredient per litre.

ABATE® 1.1G is 1.1% w/w active ingredient per kg.

Application

USE ONLY AS DIRECTED.
See table below.

General Directions

The dosage rate varies depending on depth of water, organic matter content and amounts of vegetation.

Treatment Cycle

ABATE® 500 - 1 month
ABATE® 1.1G - 2 - 3 months

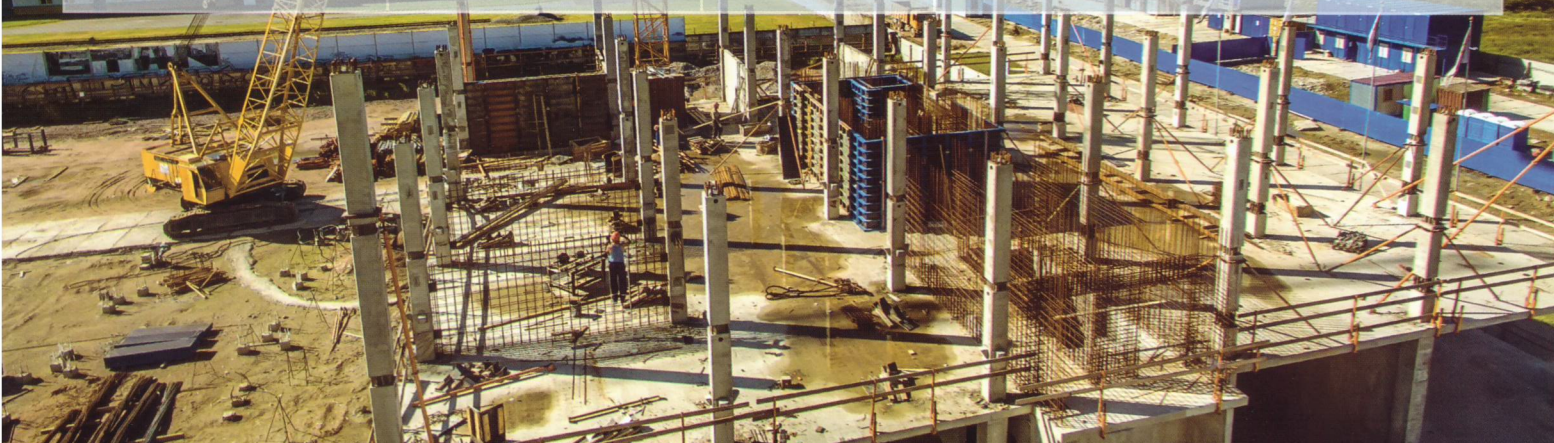
ABATE® 500 Application

PEST	LOCATION	DOSAGE		DILUTED SPRAY PER HECTARE
		10 Litres Water	Per Hectare	
Larvae (<i>Culex quinquefasciatus</i> , <i>Aedes aegypti</i>)	Stagnant water (Ponds, lakes, marshes, drains, and breeding areas).	12 ml (15 ml*)	120 ml (150 ml*)	100 Litres
Adult (<i>Aedes aegypti</i>)	Inside and outside of premises (Residential and commercial).	Ultra low Volume (ULV) 160 ml	400 ml	25 Litres/ha (Mist Blower / Vehicle mounted)

* Highly Polluted Stagnant Water with Dense Vegetation and Organic Waster

ABATE® 1.1G Application

PEST	LOCATION	DOSAGE		METHOD OF APPLICATION
		10m ²	Per Hectare	
Larvae (<i>Culex quinquefasciatus</i> , <i>Aedes aegypti</i>)	Shallow stagnant water area such as ponds and drains. Water containers, water tanks, ant traps, flower pots, and vases.	5 g 2 g/18 litres water (equivalent to 1 kerosene can)	5 kg	Spread the ABATE® 1.1G granules evenly and repeat application at 2-3 months intervals.



ABATE® can be applied using any of the following:

- Handheld pressure spray
- Knapsack sprayer
- All-terrain vehicles equipped with hydraulic spraying equipment



ABATE® 1.1G

This brochure is intended as advice.

The recommendation for use issued for each product should be carefully observed.

Always read the label and product information before use.

ABATE® 1.1G is for general use.

ABATE® 500 is for use by public health (PCO).

READ LABEL BEFORE USE

Disclaimer: The information submitted in the publication is based on current BASF knowledge and experience. In view of the many factors that may affect its application, this data does not relieve the user from carrying out their own tests. The data does not imply assurance of certain properties or of suitability for a specific purposes. It is the responsibility of the user to ensure that any proprietary rights and existing laws and legislation are observed. © Copyright BASF 2018.

® Registered trademark of BASF

JIRP.P/0318/128