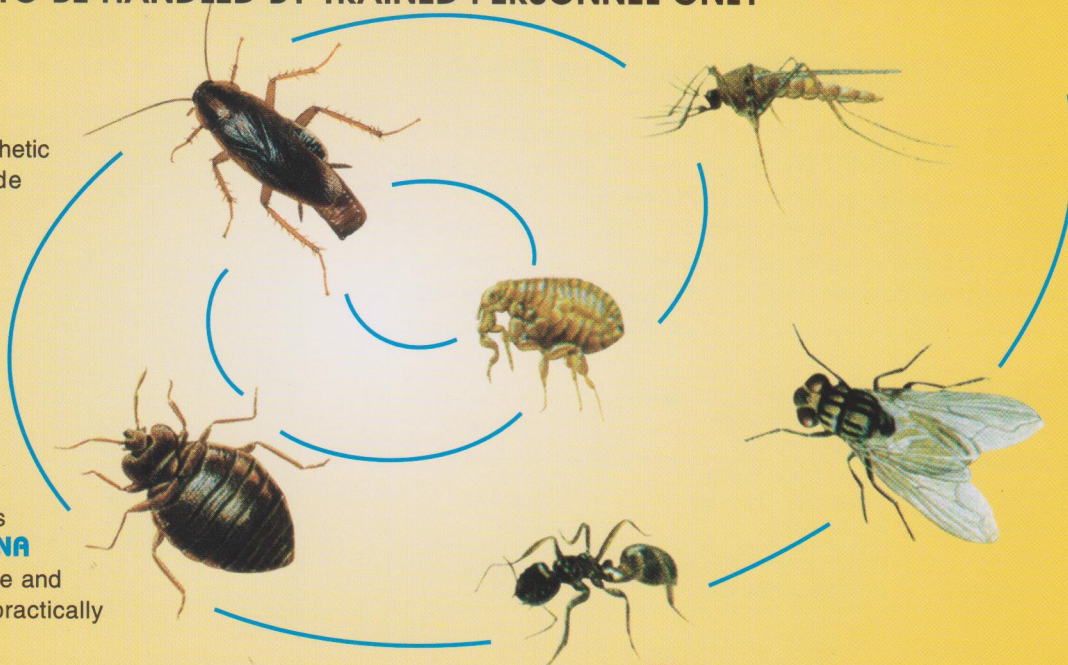




## GOOD PERFORMANCE RESIDUAL INSECTICIDE WHICH DOES NOT STAIN TO BE HANDLED BY TRAINED PERSONNEL ONLY

**FENDONA SC** is a synthetic pyrethroid insecticide developed specifically for the control of major pests harmful to public health, such as disease vectors and public hygiene, nuisance, and food-storage pests. It is a broad-spectrum, high performance product that is active via contact or ingestion and provides extended control. **FENDONA SC** does not stain or corrode and the spray deposit is practically invisible.



• **FENDONA SC** has the following features:

• **BROAD SPECTRUM**

Controls mosquitoes, cockroaches, ants, bedbugs, fleas, litter beetles and flies. **FENDONA SC** is active against many strains of insects that have developed resistance to other classes of insecticides.

• **GOOD CONTROL**

Provides good control at low dosage rates.

• **DOES NOT CORRODE OR STAIN**

Can be used in domestic and public areas.

**FENDONA SC** consists of small particles of crystalline active ingredient suspended in water. It works by blocking the passage of sodium ions through sodium channels in the nerve membranes thereby preventing transmission of the nerve impulse.



Registered by:

**BASF (Malaysia) Sdn. Bhd.** (182671-M)

2, Jalan U8/87, Seksyen U8, Bukit Jelutong, 40706 Shah Alam,  
Selangor Darul Ehsan, Malaysia.

Tel: 03-5628 3888 Fax: 03-5628 3777

Agricultural Products

**BASF**  
The Chemical Company



# Knockdown

**FENDONA SC** provides good knockdown performance which continues for a considerable period after application.

# Flushing

**FENDONA SC** also has a useful flushing action. In commercial use trials involving moderate to heavy cockroach infestations, a flushing effect was observed within 5 minutes of application.

# Residual Activity

In numerous laboratory studies and field trials, **FENDONA SC** has shown outstanding residual activity.

# Recommended Dosage Rates

For the control of flying and crawling insects, the recommended dose rates for **FENDONA SC** are 15 or 30 mg a. i. per square metre, depending on the level of infestation, the residual effect required and the nature and condition of the treated surface. For surface treatments for the control of stored product insects, the recommended dose rates are 22.5 or 45 mg a. i. per square metre.

Premises	Target Pests	Dosage Rate / 10 Litres Of Water
Kitchens, restaurants and food storage and processing area.	Mosquitoes - adult ( <i>Anopheles</i> sp.)	200 ml
	Mosquitoes - Larva ( <i>Aedes</i> sp., <i>Culex</i> sp.), <i>Mansonia</i> sp.)	400 ml
	Cockroaches, ants, bedbugs, fleas, litter beetles	400 ml
	Flies	200 ml

# Application

**FENDONA SC** is suitable for the control of crawling and flying insects in domestic, public and industrial premises. When used as directed, it can be applied in kitchens, restaurants and food storage and processing area.

**FENDONA SC** is suitable for use with most types of knapsack sprayers and other residual spray equipment commonly used to control public health pests. Applications should be made at low pressure, not above 30 p.s.i. (2 Bar), and using a nozzle which produces even sized droplets.

**FENDONA SC** should be thoroughly mixed with water to give the required concentration. Treated surfaces should be thoroughly sprayed to the point of minimal run off, ensuring uniform coverage and paying particular attention to those areas where insects are most likely to come into contact with the insecticide. Always follow the instructions as described on the product label.



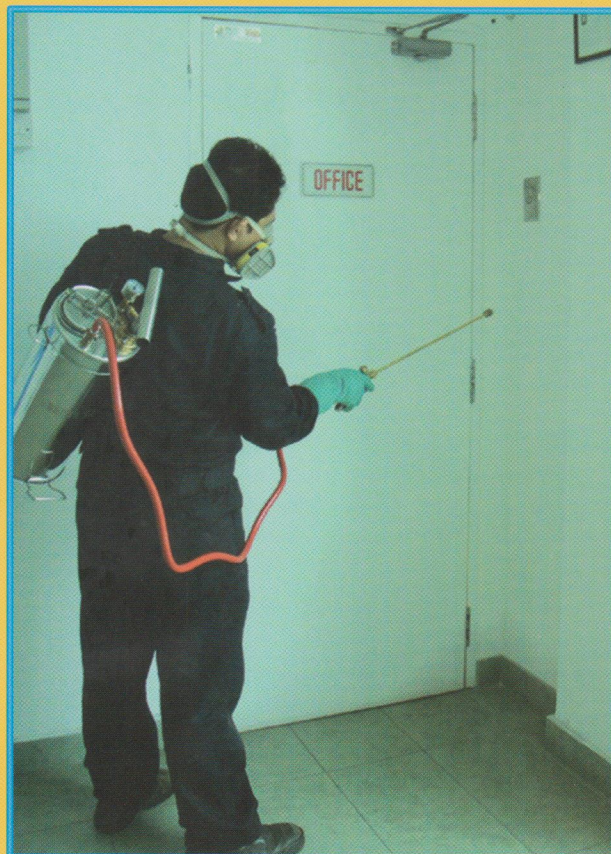
Apply **FENDONA SC** with 'Fan Nozzle' as residual surface spray effective on different surfaces such as tiles, cement, wood etc.



Mix well with water in the spraying tank.



Spray along the edge area or running track of insects.



Treated surfaces should be thoroughly sprayed to the point of minimal run off.