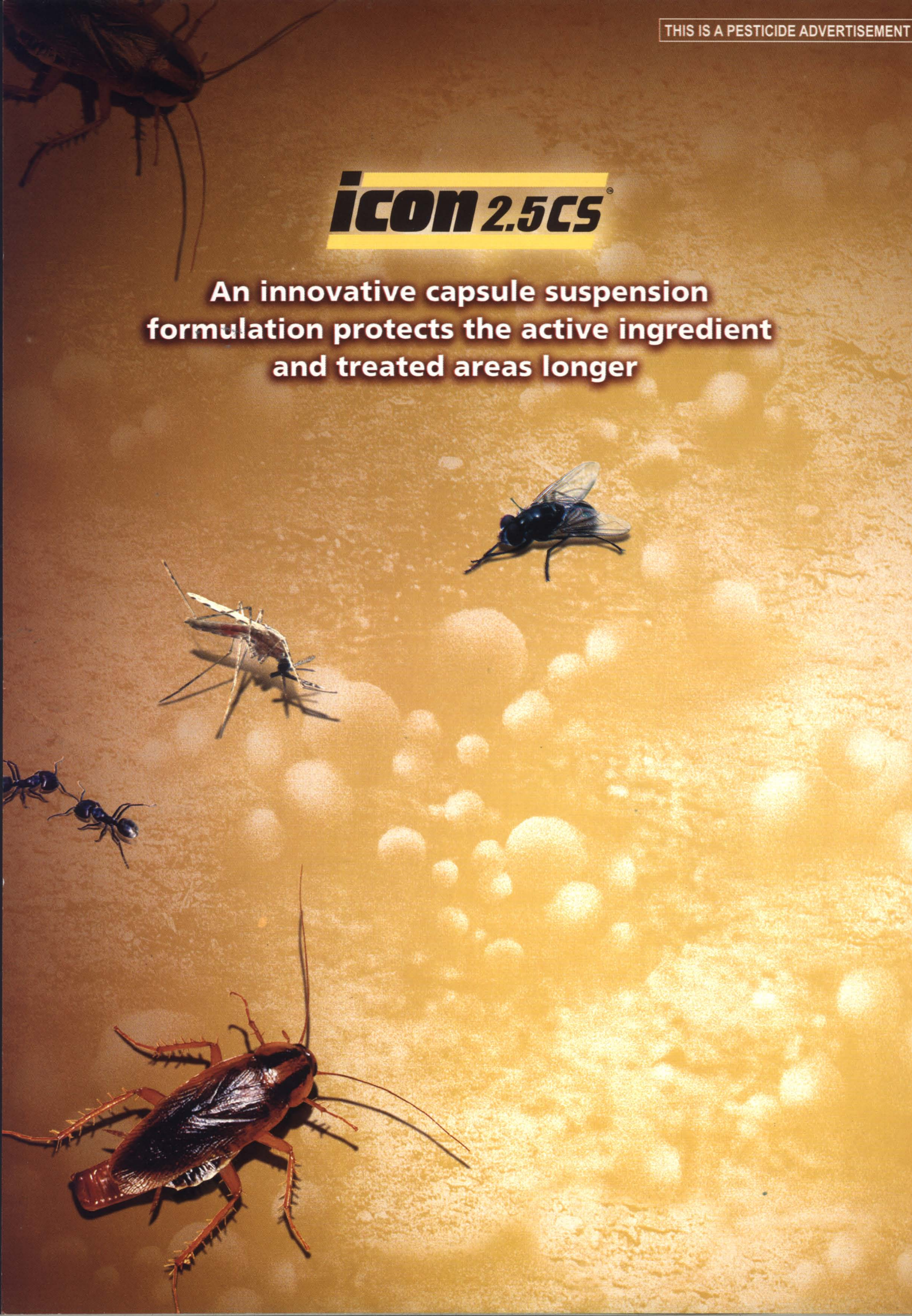


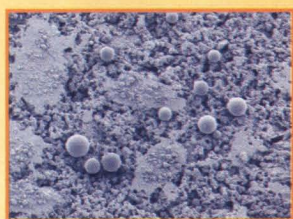
icon 2.5CS

**An innovative capsule suspension
formulation protects the active ingredient
and treated areas longer**



MAIN BENEFITS OF ICON 2.5CS®

- Provides long residual activity since the polymer covering protects the active ingredient from various degrading factors
- No visible residue on sprayed surfaces
- Effective against public health insects
- Versatile - works on all types of surfaces, including concrete, wood, painted walls, vinyl and tiles
- Applicable for external perimeters and indoor applications in domestic, industrial and commercial situations
- Easy and convenient to handle



ICON 2.5CS® microcapsules on concrete 10 weeks after application



ICON 2.5CS® microcapsules on plywood and cockroach leg

Formulation Protects the Active Ingredient and Treated Areas Longer

As residual activity of insecticides is still one of the main requirements for a cost effective means of controlling insect pests in urban environment, **ICON 2.5CS®** is developed specifically for the pest control industry.

As an advanced pyrethroid insecticide, **ICON 2.5CS®** is effective against public health insects. Further, as a capsule suspension formulation, the gradual release of the active ingredient provides long residual activity since the polymer covering protects it from various degrading factors.

ICON 2.5CS®

ICON 2.5CS® is a water based formulation utilizing state-of-the-art micro-encapsulation technology. It contains 25 grams of lambda-cyhalothrin per liter. **ICON 2.5CS®** insecticide is a proprietary formulation, consists of the most potent synthetic pyrethroid lambda-cyhalothrin enclosed in small polymer capsules.



Application Rates

Pests	Situation	Rate (ml)	
		Insecticide/ 1 Litre Water	Spray / m ²
Cockroaches (<i>Blattella germanica</i>), House Flies (<i>Musca domestica</i>), Mosquitoes (<i>Anopheles</i> sp.) Ants (<i>Camponotus</i> sp.)	Indoor, Maintenance spray	10 ml	40 ml
	Outdoor, Clear out spray	20 ml	40 ml

Handling and Application

Dilute **ICON 2.5CS®** with water for application. Fill the application equipment with the desired volume of water, add the appropriate rate of **ICON 2.5CS®** as shown in the table. Prepare only the required amount of solution for each application.

For best results, application should be made as a coarse low pressure spray to areas where crawling insect pests hide, and as uniform residual surface treatment for flying insect pests. Reapplication of **ICON 2.5CS®** depends on the type of surface sprayed and the surroundings.

Syngenta Crop Protection Sdn Bhd (437832-V)

MR1-02-02, Sri Acappella Commercial Annex, No 1, Jalan Lompat Tinggi 13/33, Seksyen 13, 40100 Shah Alam, Selangor Darul Ehsan.
Tel: 03-5510 9878 Talian Kecemasan: 1-800-806-294 E-mel: crm.support@syngenta.com

ALWAYS READ THE PRODUCT LABEL BEFORE USE 在未使用前詳細閱讀產品說明

syngenta®

JIRP. P/0607/339