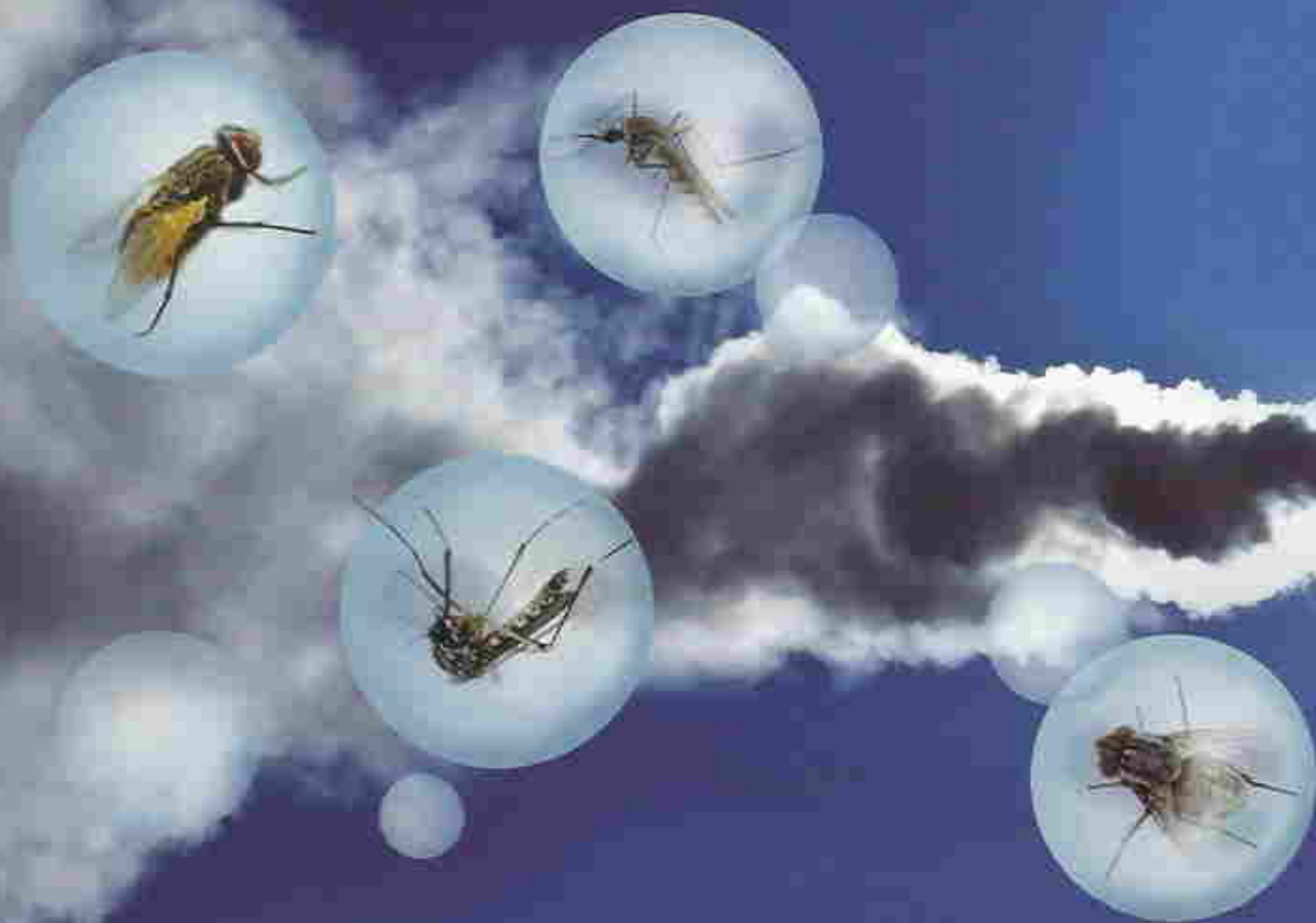


# SumiPro<sup>TM</sup> EW

Powerful, Innovative,  
Clean insecticide for  
space spray



FOR INTERNAL  
CIRCULATION ONLY



SUMITOMO CHEMICAL

## Fast acting evaporation retarded water-base space spray concentrate

SumiPro™ EW is a novel water-base concentrate for space spray and thermal fogging applications combining Sumitomo's proprietary pyrethroids and "AER" (Advanced Evaporation Retardant) technology. This water based and water dilutable formulation has been optimized to deliver fast knockdown and excellent kill against flying insects

### Specifications and Features

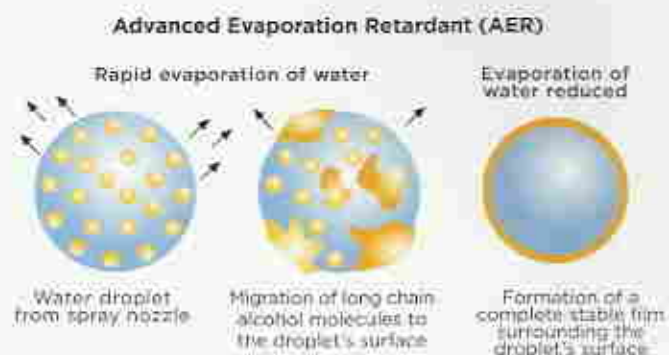
SumiPro™ EW is a combination of Sumitomo's proprietary knockdown active "SumiOne™" (metofluthrin) which is popular in house hold insecticides (aerosol, coil, liquid vaporizer, etc.) as it has super-quick knockdown at very low dosage with high safety profile, high kill active "Gokilaht™-S" (cyphenothrin) and synergist piperonyl butoxide that blocks metabolic resistance mechanisms giving excellent performance against hard to kill insects.

SumiPro™ EW utilizes new "AER" (Advanced Evaporation Retardant) technology which not only ensures aerosol droplets remain at an optimal size but also enable application by means of thermal fogging. However, SumiPro™ EW could provide maximum biological efficiency even when used without a fog generator (or fogging carrier).

Formulation type	Emulsion in water (EW)	
Active ingredient	SumiOne™	0.1%w/w
	Gokilaht™-S	6.0%w/w
	Piperonyl Butoxide	10.0%w/w
Use pattern	Space spray concentrate (ULV or thermal fogging)	
Application rate: Mosquito	Cold fogging (vehicle mounted ULV), outdoor	1:9 dilution, 500ml/ha
	Thermal fogging / Cold fogging (Portable ULV), outdoor	1:99 dilution, 10L/ha
Application rate: House fly	Thermal fogging / Cold fogging (Portable ULV), outdoor	1:74-1:99 dilution, 10L/ha

Feature	Benefit
SumiOne™ as knockdown AI	<ul style="list-style-type: none"> <li>• Super-quick KD-at very low dosage</li> <li>• High efficacy with high safety profile</li> <li>• Activates insects to increase exposure to spray droplets</li> </ul>
Gokilaht™-S as kill AI PBO as synergist	<ul style="list-style-type: none"> <li>• Ensured quick-kill</li> <li>• Enhanced activity against resistant insects</li> </ul>
Water dilutable	<ul style="list-style-type: none"> <li>• Green and Environmental friendly</li> <li>• Clean treatment</li> <li>• Cheaper than petro solvent</li> </ul>
Non-flammable	<ul style="list-style-type: none"> <li>• Safer in storage and usage</li> </ul>
Advanced Evaporation Retardant technology	<ul style="list-style-type: none"> <li>• Stabilize sprayed droplets (long distance control)</li> <li>• Maximum efficacy with or without carrier for thermal fog (cost-effective)</li> </ul>

"AER" (Advanced Evaporation Retardation) technology maintain droplet size and efficacy at 100m distance.



## Safety Profile

Items	SumiPro™ EW
Acute oral effects	Rat: LD50 between 300-2000mg/kg
Acute dermal effects	Rat: LD50 >2000mg/kg (Male and Female)
Acute inhalation	Rat: LC50 >3130mg/m <sup>3</sup> (4hr)
Eye effects	Rabbit: Mild irritant
Skin effects	Rabbit: Non irritant
Sensitization	Guinea pig: Negative (Buehler Test)

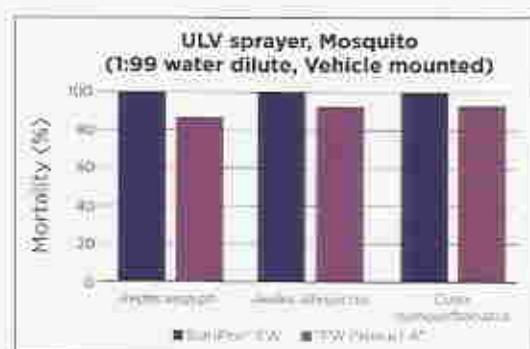
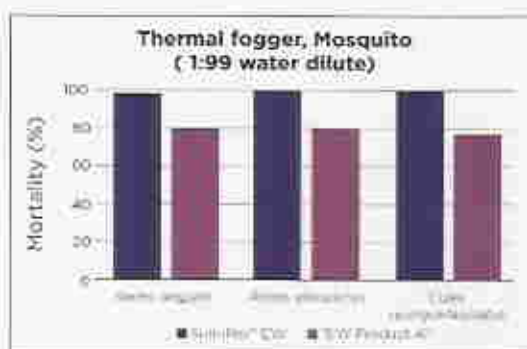
## Technical support

SumiPro™ EW is supported by a comprehensive registration package comprising toxicological, stability and efficacy data. It also comes with the benefit of Sumitomo Chemical technical support from our regional laboratory in Malaysia.

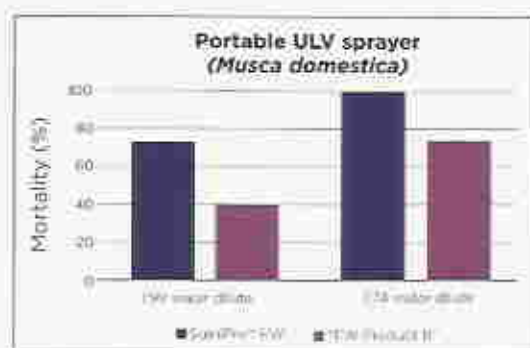
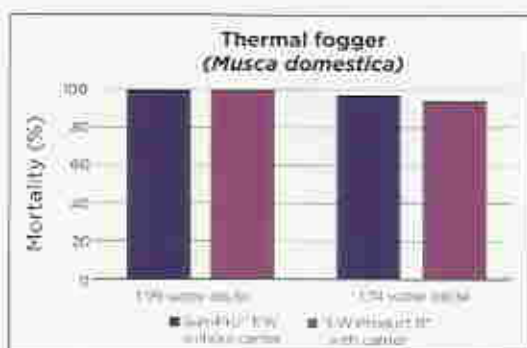
## Biological Activity

A wide range of laboratory and field data is available. The following graphs summarize such applications in comparison with other "EW products" in the market:

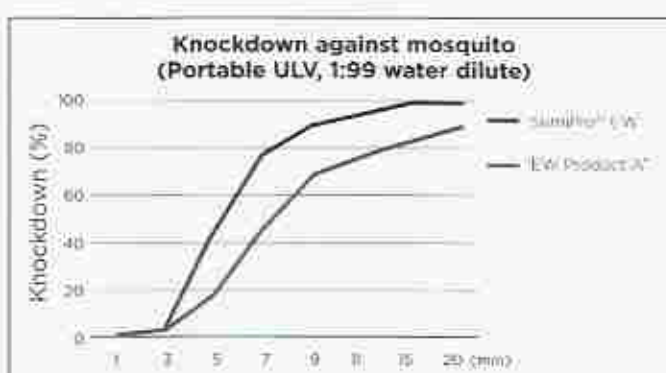
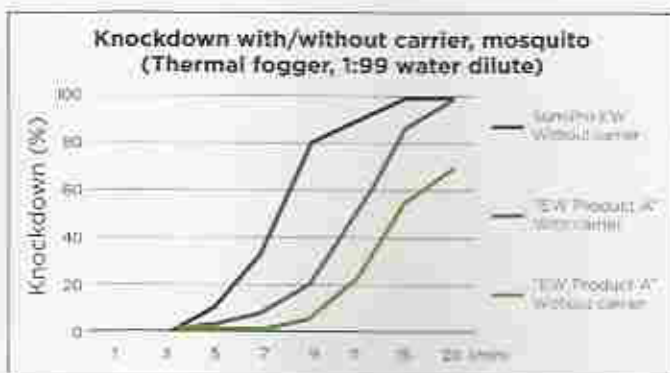
SumiPro™ EW provided excellent kill when applied by thermal fogger or as a ULV against mosquitoes in field trials, Malaysia



SumiPro™ EW provided excellent kill when applied by thermal fogger without using carrier or as a ULV against house fly in field trials, Malaysia



SumiPro™ EW demonstrated excellent knockdown even without using carrier for thermal fogging and ULV sprayer (portable) in field trials, Malaysia





In vehicle mounted ULV field trials, SumiPro™EW demonstrated excellent performance up to 100m from the sprayer with minimum decrease of droplet size.



Trials using truck mounted ULV

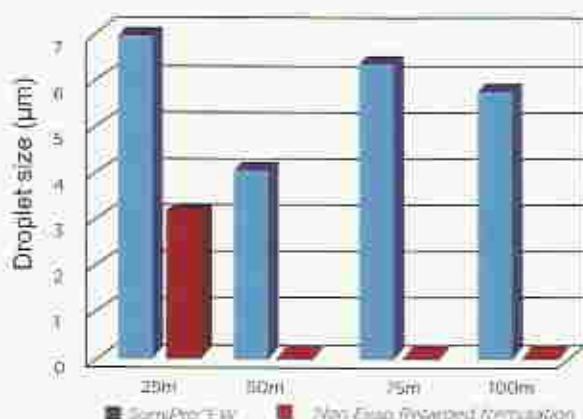


Rotating slide impactors

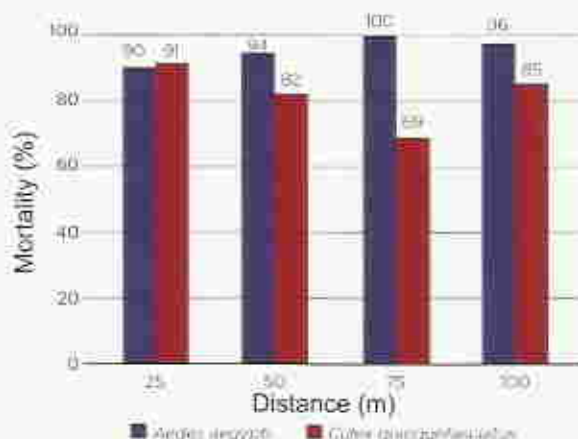


Insect test cage

**SumiPro™EW ULV Trials Turkey**  
VMD of Droplets with Distance from Sprayer



**Field Trials with SumiPro™EW Ankara, Turkey**



SumiPro™EW, SumiOne®, Goklath®-S are registered trademarks of Sumitomo Chemical Company Ltd, Tokyo, Japan.

## Further Information

Please read the label carefully before use.

Further information on this, and other products within the Sumitomo Chemical range, may be obtained from our local office.

### Sumitomo Chemical (Asia Pacific) Pte Ltd

150, Beach Road, #17-07/08, Gateway West,  
Singapore 189720  
Tel : (65) 6671 4100  
Fax : (65) 6296 3779

### Sumitomo Chemical Philippines Inc

18th Floor, Philam Life Tower  
8767 Paseo De Roxas  
Makati City, Metro Manila  
1226 Philippines  
Tel : +632 - 885 0671 80  
Fax : +632 - 885 0630 32  
HP : +63 - 9175 1893 73

### Sumitomo Chemical (Thailand) Co., Ltd

Level 35, Unit 3505, Exchange Tower  
388 Sukhumvit Road  
Klongtoey, Bangkok 10110  
Thailand  
Tel : (66) - 2 663 43378  
Fax : (66) - 2 663 4336

### Sumitomo Chemical Enviro-Agro Asia Pacific Sdn Bhd

Representative Office  
Jakarta Stock Exchange Tower II  
17<sup>th</sup> Floor, Jl. Jenderal Sudirman Kav. 52-53  
Jakarta 12190, Indonesia  
Tel : (62-21) 515 7748  
Fax : (62-21) 515 7799

### Sumitomo Chemical Enviro-Agro Asia Pacific Sdn Bhd

Lot 62A, Persiaran Bunga Tanjung 1  
Senawang Industrial Park  
70400 Seremban, Negeri Sembilan  
Malaysia  
Tel: (606) - 679 3711  
Fax : (606) - 679 3698

### Sumitomo Chemical Vietnam Co., Ltd

Villa No. 7-20<sup>th</sup> Street - Binh An ward  
District 2 - HCM City  
Vietnam  
Tel: (08) 3740 7572 - (08) 3740 7576  
Fax : (08) 3740 7573



**SUMITOMO CHEMICAL**



**Responsible Care®**  
OUR COMMITMENT TO SUSTAINABILITY